

**E142**
**DIGITAL PULL-OFF (BOND) STRENGTH TESTER. CAPACITY: 16 KN**

STANDARDS: EN 1542, EN 1348, EN 1015-12, EN 13687-2, EN 13963, EN 14496 / NF P18-858 / BS 1881:207

This dynamometer measures the adhesive force and the tensile strength of two layers of materials (concrete, facing plasters, mortars, building plasters, lime etc.) and is particularly suitable for applications concerning testing repairs of any structure where the bond strength between two layers is an essential factor.

Compact, light, for use in any location, this Pull-Off Tester is fitted with a load cell and high resolution large digital display unit; it is therefore suitable for measurements from low loads up to 16 kN, granting a wide working range and ideal for a large number of applications and materials. The direct tensile force is applied by rotating the hand wheel.

The three feet of the unit can be fixed in the **large** position (overall dimensions 176 mm diameter, see drawing "A") with very stable bearing, or in the **compact** position (overall dimensions 92.5 mm diameter, see drawing "B"), to perform tests in narrow spaces, or for specimens close one to the other.

**Specifications:**

- Load capacity: 16 kN
  - Resolution: 10 N
  - Working range: 0.25 to 16 kN
  - Accuracy and repeatability: better than  $\pm 1\%$
  - Complete with traceable calibration certificate
  - Battery operated
  - Serial port for PC connection
  - Hand wheel rounds: 60 with mechanical round/counter
  - Graphic indication of the applied load rate
  - Seat ball assuring axial/central load application
- Supplied complete with carrying case, but **without** accessories to perform the test, which have to be ordered separately.

To perform the test a common electric drill is required.

**Dimensions:** 410x210x270 mm

**Weight:** 5.5 kg approx.

**E142-01**
**DIGITAL PULL-OFF TESTER CAPACITY: 5 KN**

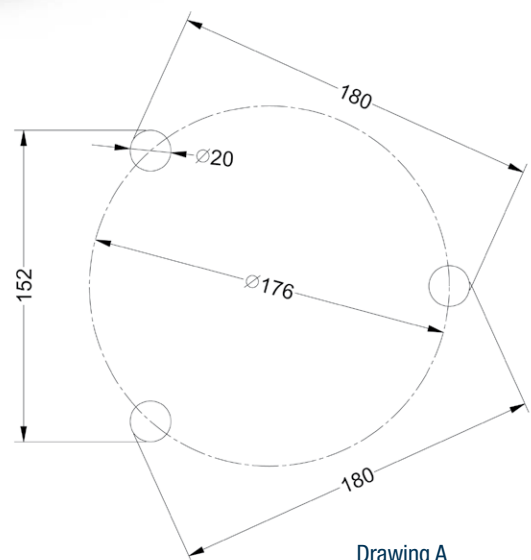
Identical to mod. E142 but with load cell and digital display range 0-5 kN for more accurate measurements on low strength values



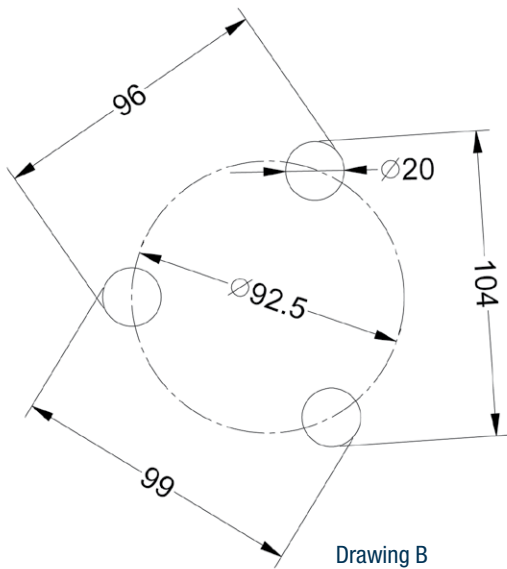
**E142**  
with feet  
in large position



**E142**  
in aluminium case



Drawing A



## ACCESSORIES

- E142-10** SOFTWARE complete with connection cable to download test results to the PC
- E143** ADHESION TEST ALUMINIUM DISC 20 mm  $\varnothing$  by 21 mm thick (n° 10 pieces)
- E143-01** ADHESION TEST ALUMINIUM DISC 50 mm  $\varnothing$  by 31 mm thick (n° 10 pieces)
- E143-10** ADHESION TEST STAINLESS STEEL DISC 50 mm  $\varnothing$  by 21 mm thick (n° 10 pieces) It conforms to EN 1015-12 Specification.
- E143-13** ADHESION TEST ALUMINIUM DISC, square, 50x50 mm, 21 mm thick (n° 10 pieces)  
Standard: EN 1348
- E143-11** CYLINDRICAL RING, having truncated cone shape, inside  $\varnothing$  50 mm  
Standard: EN 1015-12
- E143-02** DRILL BIT WITH CENTERING BIT, 20 mm diameter, for the preparation of the test surface.
- E143-03** DRILL BIT WITH CENTERING BIT, 50 mm diameter, for the preparation of the test surface.
- E143-12** ACRYLIC ADHESIVE GLUE, 300 ml. cartridge, complete with small pump and nozzles.



## SPARE

- E143-09** Tie rod with spheric head for Disc/Dynamometer coupling.

